

DOUBLE SHANK BALL

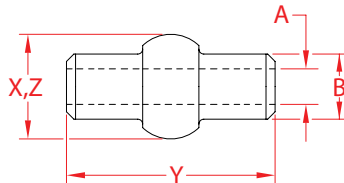
316 STAINLESS STEEL



Import



Precision
Machined



ITEM	A (wire)	B BEFORE (swage)	B AFTER (swage)	BALL BEFORE (swage)	BALL AFTER (swage)	X (height)	Y (length)	Z (width)	WT (lb)	PACKAGING TYPE	EACH (qty)	INNER (qty)	CARTON (qty)	UPC
S0756-0001	1/16"	0.13"	0.11"	0.21"	0.19"	0.21"	0.36"	0.21"	0.01/100	POLYBAG	1	50	5,000	791506050841
S0756-0002	3/32"	0.16"	0.14"	0.28"	0.25"	0.28"	0.53"	0.28"	0.4/100	POLYBAG	1	50	4,000	791506050858
S0756-0003	1/8"	0.22"	0.19"	0.35"	0.32"	0.35"	0.69"	0.35"	0.6/100	POLYBAG	1	50	3,000	791506050865
S0756-0004	5/32"	0.25"	0.22"	0.42"	0.38"	0.42"	0.85"	0.42"	0.01	POLYBAG	1	10	2,000	791506050872
S0756-0005	3/16"	0.29"	0.26"	0.49"	0.44"	0.49"	1.01"	0.49"	0.01	POLYBAG	1	10	2,000	791506050889
S0756-0007	1/4"	0.40"	0.35"	0.62"	0.57"	0.62"	1.34"	0.62"	0.04	POLYBAG	1	10	1,000	791506050902
S0756-0009	5/16"	0.48"	0.41"	0.76"	0.69"	0.76"	1.66"	0.76"	0.07	POLYBAG	1	10	500	791506050919

NOTE:
ALL DIMENSIONS ARE NOMINAL (+/- 3%) AND ARE SUBJECT TO CHANGE WITHOUT NOTICE.